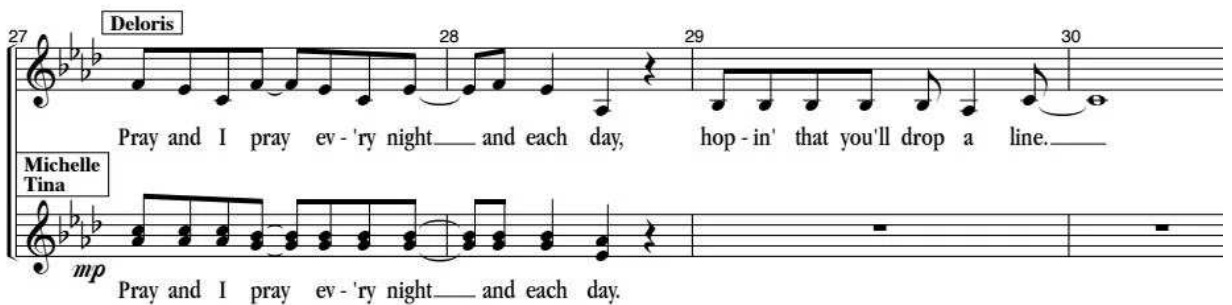
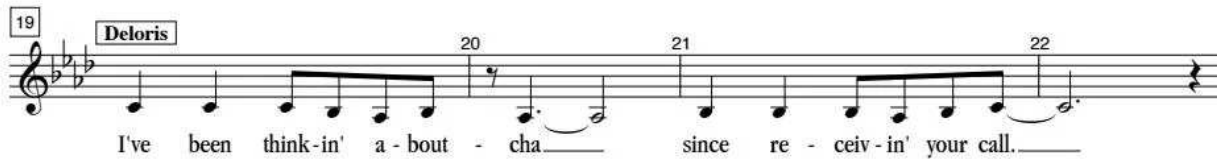
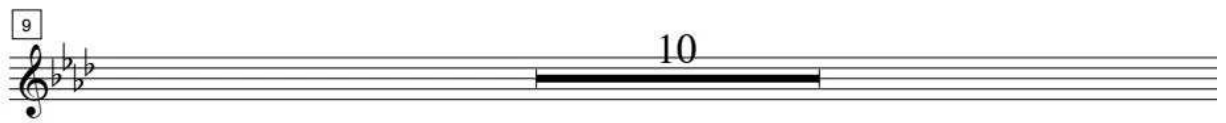


Deloris,  
Tina,  
Michelle

# Take Me To Heaven (Nightclub)

1

Hot Disco Beat ♩ = 150



31 Pray and I pray— 'til you sweep— me a - way, straight to cloud num - ber nine!

32

33

Pray and I pray— 'til you sweep— me a - way.

34 — You are simp - ly too di - vine! — Take me to hea

35

36

37

*mf*

Aw... You are simp - ly too di - vine! — He

38 en! — Take me to ec - sta - sy! —

39

40

en! — Ec - sta - sy! —

41 — I'll give you all I've got, 'cause no - thin's as hot as when you

42

43

*(both)*

— Ec - sta - sy!

## #1 — Take Me To Heaven (Nightclub)

44 groove with me. 45 And when you strut your stuff— and do your thing, 46 47

No, no, no, no. Oh

Detailed description: This system contains two staves of music. The top staff is a vocal line in G major with lyrics: "groove with me." (measure 44), "And when you strut your stuff—" (measure 45), and "and do your thing," (measures 46-47). The bottom staff is a piano accompaniment with lyrics: "No, no, no, no." (measures 44-45) and "Oh" (measures 46-47). The piano part features a melodic line in the right hand and a bass line in the left hand.

48 just can't help sur-ren - der - ing!— You're so strong, — you're so sweet, You're what make 49 50

Ah You're what make

Detailed description: This system contains two staves of music. The top staff is a vocal line in G major with lyrics: "just can't help sur-ren - der - ing!—" (measure 48), "You're so strong, — you're so sweet, You're what make" (measures 49-50). The bottom staff is a piano accompaniment with lyrics: "Ah" (measure 48) and "You're what make" (measures 49-50). The piano part features a melodic line in the right hand and a bass line in the left hand.

51 — me com - plete. 52 I just wor - ship at — your feet! 53

— me com - plete. Ah

Detailed description: This system contains two staves of music. The top staff is a vocal line in G major with lyrics: "— me com - plete." (measure 51), "I just wor - ship at — your feet!" (measures 52-53). The bottom staff is a piano accompaniment with lyrics: "— me com - plete." (measure 51) and "Ah" (measures 52-53). The piano part features a melodic line in the right hand and a bass line in the left hand. A dynamic marking of *f* is present in measure 52.

54 — Take me to heav - en!— Take me to king - dom con 55 56 57

*mf* — Take me to heav - en! Take me to king - dom con

Detailed description: This system contains two staves of music. The top staff is a vocal line in G major with lyrics: "— Take me to heav - en!—" (measure 54), "Take me to king - dom con" (measures 55-57). The bottom staff is a piano accompaniment with lyrics: "— Take me to heav - en! Take me to king - dom con" (measures 54-57). The piano part features a melodic line in the right hand and a bass line in the left hand. A dynamic marking of *mf* is present in measure 54.

#1 — Take Me To Heaven (Nightclub)

58 *I'll take an - y vow! Just take me*

59 *I'll take an - y vow!*

60

61 *now. Take me! Take me high*

62

63 *f Take me! Take me high*

Hoo\_\_\_\_\_ hoo\_\_\_\_\_

64 *er!\_\_\_\_\_ Take me! Take me high - er, high - er!*

65

66 *er!\_\_\_\_\_ Take me! Take me high - er, high - er!*

67 *A bit more laid-back ♩=122*

68

69 *Deloris*

*Don't know how you do what you do, —*

Ow!

## #1 - Take Me To Heaven (Nightclub)